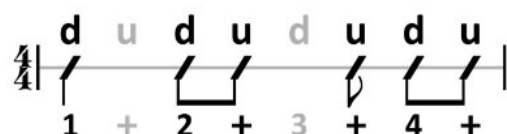


Wakeylele Ukulele: Standardised Notation For Song Copy

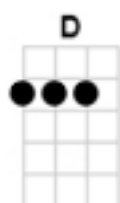


Suggested strumming Pattern. Example shown is Island Strum indicating 4/4 time often shown as **D DU U DU**

- [Start of bar
-] End of bar
- [X] 1 bar (typically 4 ,3 or 2 beats) of chord X depending on time signature
- X/ 1 beat of chord X. No Strumming specified, use **X↓** or **X↑** instead
- X// 2 beats of chord X. Often indicating continuation of chords. i.e Half a bar in 4 time. Should be played with 1st and 2nd beat of strumming pattern being used or otherwise notated
- X↓ 1 down strum of chord X
- X↓↓ 2 down strums of chord X etc.
- X↑ 1 up strum of chord X
- X↑↑ 2 up strums of chord X etc.
- [X-Y] = X// Y// a bar : Usually 2 beats of X then 2 of Y(see note above for **X//**)
- [N/C] no playing until next shown chord
- Hello there no singing (greyed-out words = instrumental phrase)
- ♦Stop! No singing or playing till next indication
- ~ Arpeggio. Play chord when individual notes (strings) are struck one by one, rather than all together at once
- ▲ Sing higher
- ▼ Sing lower

Representing Chords

e.g **D** chord



2220

Diagrammatically or Numerically

Representing Riffs

Musical riffs or instrumental breaks will be shown with the TAB system. Horizontal lines represent the 4 strings of ukulele. Numbers indicate the position fretted:-

A.....3..2.....5..3.....10...7....3....2...0.....8....8....7....3....5....3.....
 E.....3..3...5..3.....3..3..5..3.....
 C.....
 g.....0..0.....